

# Sustainability Policy



Updated March 2026

Prepared by: Agustina Lucci

# At Grupo Lucci,

through our various companies, we produce and process agricultural raw materials meant for food manufacturing.

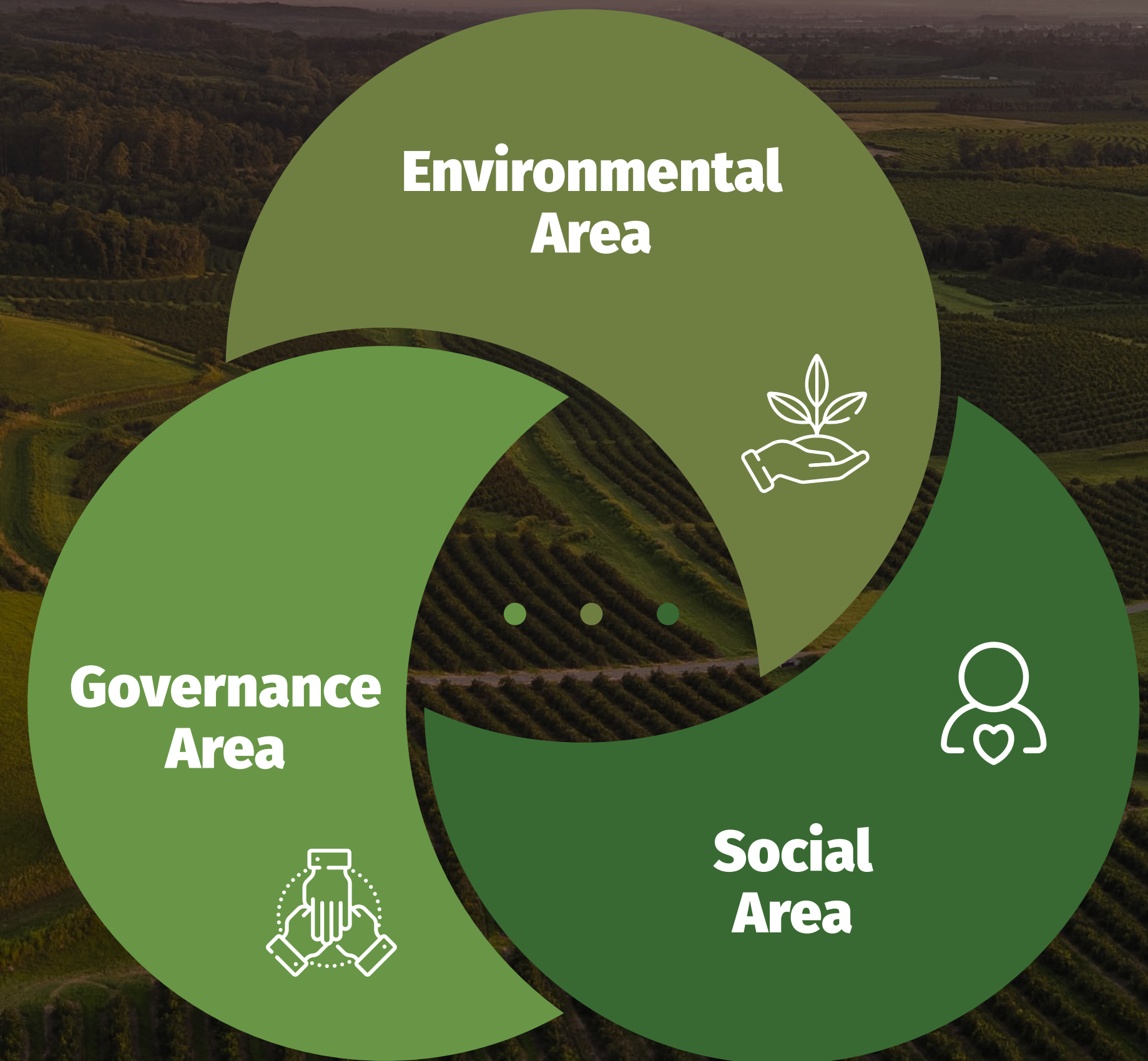
We constantly strive to add value to everything we do, based on competitiveness, sustainability, and innovation.

We contribute in a sustainable way to improving people's quality of life in the world, by offering quality-certified, natural and healthy food in a responsible manner, thus ensuring the continuity of our operations.

**Through our business model, we generate value for our various stakeholders, integrating our environmental, social and governance performance.**



# Our Commitments to Sustainable Development



## Environmental Area



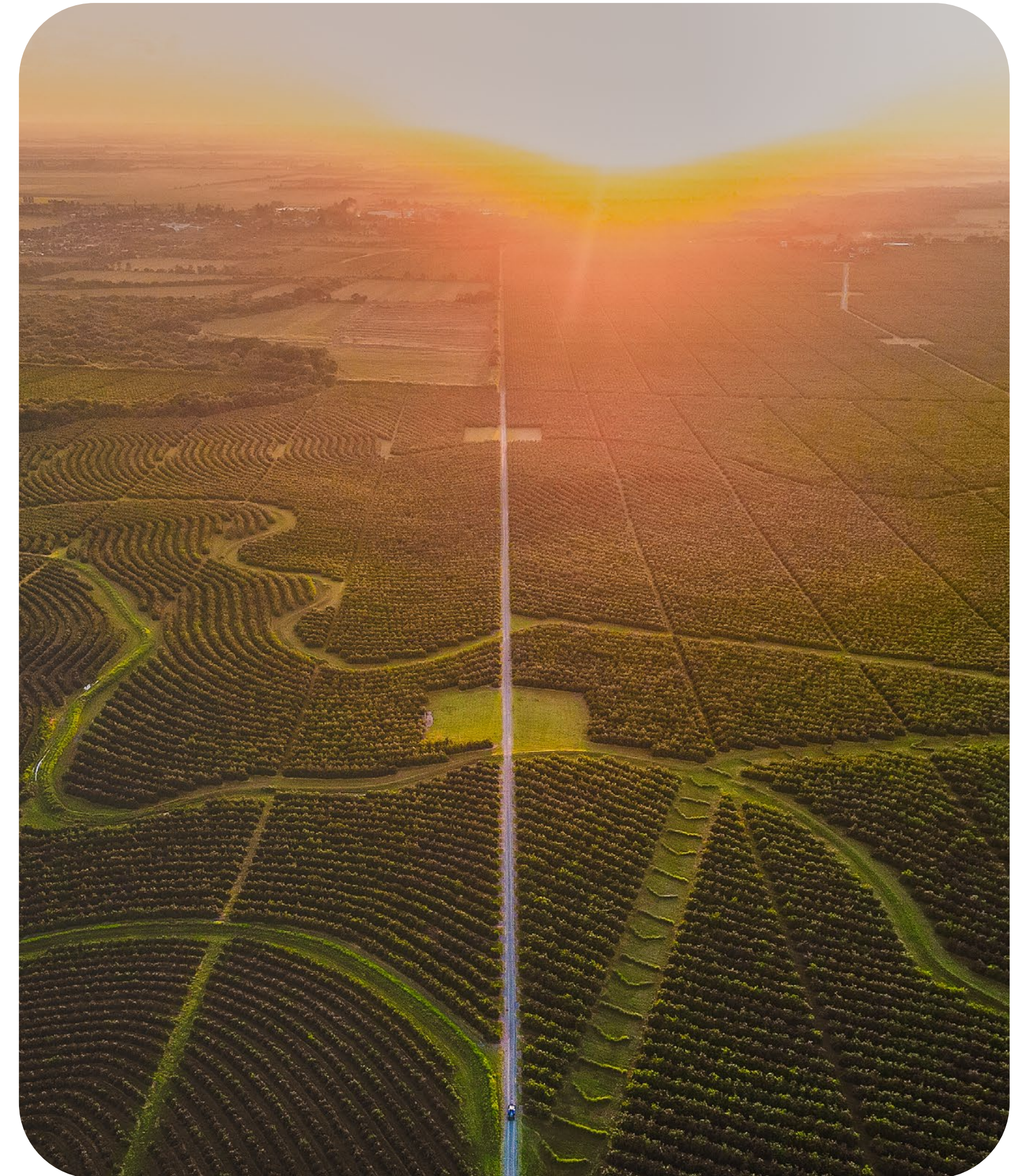
### Sustainable Agriculture and Soil Management

We promote a model of sustainable agriculture based on good practices and the protection of ecosystems. We encourage innovation in the responsible use of resources, soil health, and integrated pest management, incorporating practices that support biodiversity and strengthen the long-term resilience of our production systems.

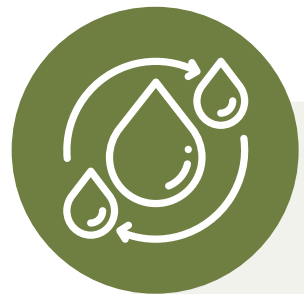


### Climate Change

We are actively working to mitigate climate change by reducing our emissions, improving energy efficiency, and incorporating renewable energy into our operations. At the same time, we are developing adaptation strategies that enable us to anticipate and manage climate risks, strengthen the resilience of our production systems, and ensure long-term business continuity.



## **Environmental Area**



### **Rational Use of Water**

Water is an essential natural resource for life in our planet, as well as a crucial resource for food production. Thus, we are committed to managing it efficiently and responsibly.



### **Biodiversity Preservation**

Biodiversity refers to the diversity of life, that is to say, the variety of living organisms we can find in our planet and the relations established between each other and with their surrounding environment. Therefore, our aim is to integrate the preservation of biodiversity and its habitat with agricultural production.



### **Circular Economy**

By means of circular economy practices, we reduce the use of resources in production, maximize their use, and ensure their final disposal, prioritizing the recovery and reuse of materials. We generate renewable electricity from the effluents resulting from lemon industrialization and manage our waste in order to obtain other products that are sold or incorporated into new production systems.

## Social Area



### Labor Practices and Human Rights

We promote and respect universally recognized human rights. We comply with applicable laws, ensuring decent working conditions, professional development, knowledge enhancement, and equal opportunities, involving our entire value chain in this commitment.



### Private Social Investment

Since 2003, through Fundación Vicente Lucci, we have channeled our social capital initiatives based on three strategic pillars that have an impact on Grupo Lucci's rural communities of influence.

- *Education* • *Citizen Engagement*
- *Labor Inclusion and Entrepreneurship*





## Governance Area



### Food Safety in Our products

We produce healthy and safe products that meet international quality and safety standards, balancing short- and long-term interests while integrating environmental, social, and economic aspects into our decision-making process.



### Supply Chain Traceability

We promote a traceable and responsible supply chain that allows us to identify and monitor the movement of our raw materials and products at every stage of the process. Through management systems and internal controls, we enhance transparency, mitigate risks, and build trust among our clients and other stakeholders.



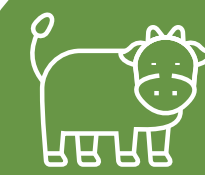


## Governance Area



### Accountability and Transparency

We foster a culturally respectful work environment that promotes equality, is sensitive to the needs of every collaborator, and respects diversity. We are committed to building healthy relationships among our collaborators, as well as strong business relations with our suppliers, clients, consultants, competitors, and the general public.



### Animal Welfare

We promote animal welfare as an integral part of our agricultural production, ensuring appropriate conditions for handling, feeding, health, and care, in compliance with current regulations and recognized standards. We encourage responsible practices that prioritize prevention, respect for animal life, and the continuous improvement of our production systems.



  
**GRUPO LUCCI**  
G R O W I N G   R E S P O N S I B L Y